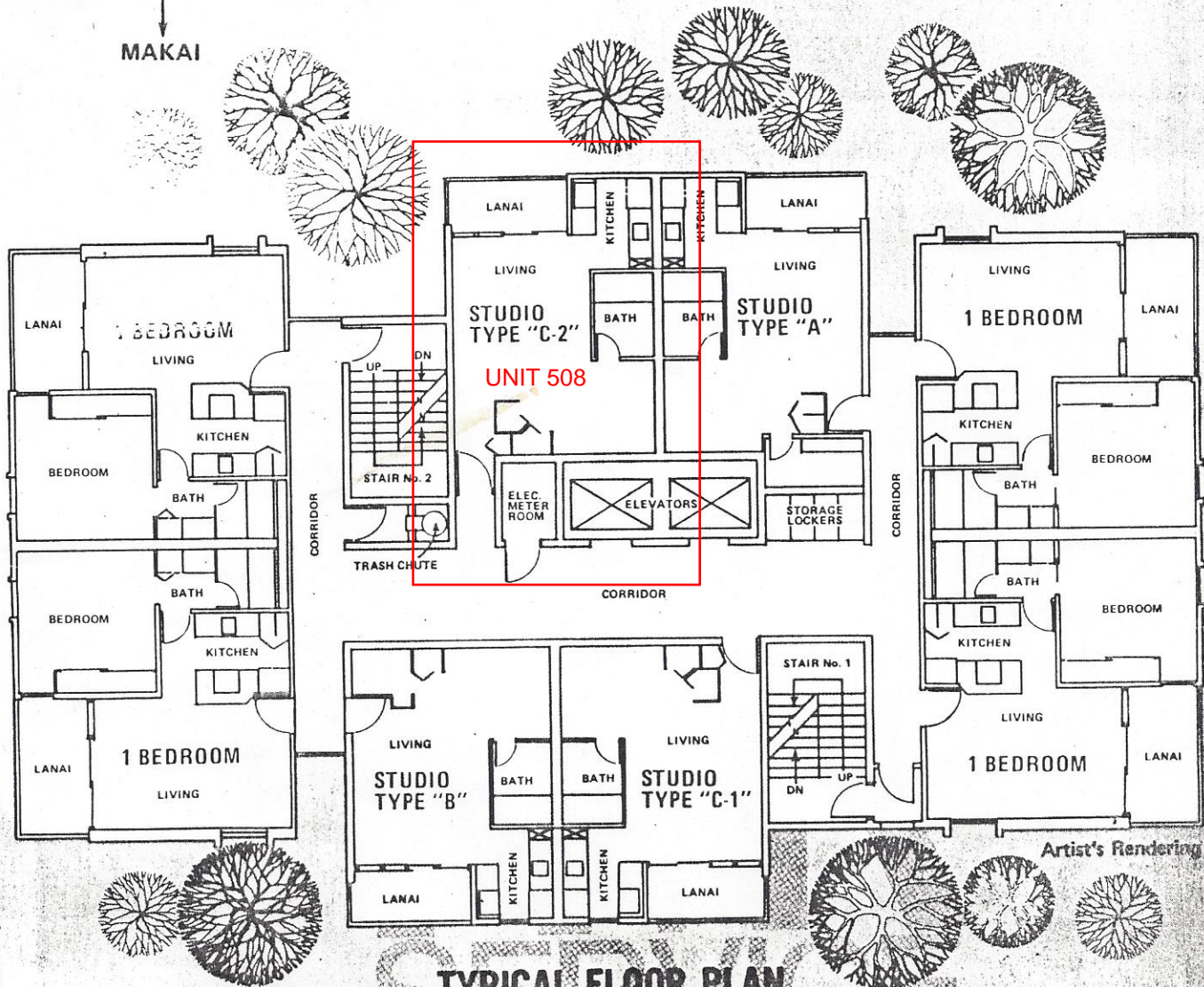


Hale Kulanui



TYPICAL FLOOR PLAN

From the fifth through twenty-seventh floors are four one-bedroom units and four studio units per floor ... innovative planning has given every unit the effect of being a "corner" unit ... assured privacy and pure comfort within is enhanced by wrap-around panoramic views.

Another innovation at Kulanui... Cablevision! Residents are assured of crisp, interference-free television and FM reception. This service is provided free of charge by the developer during Kulanui's first year of operation.

Two elevators service the building, the trash chute has openings on every floor, and storage lockers are provided on each floor.

Studio residents will find their laundry chores a breeze with the convenient laundry room. The six large washers and three launderette-size tumbler dryers may even attract one-bedroom residents away from their own washers and dryers.

Artist's Rendering